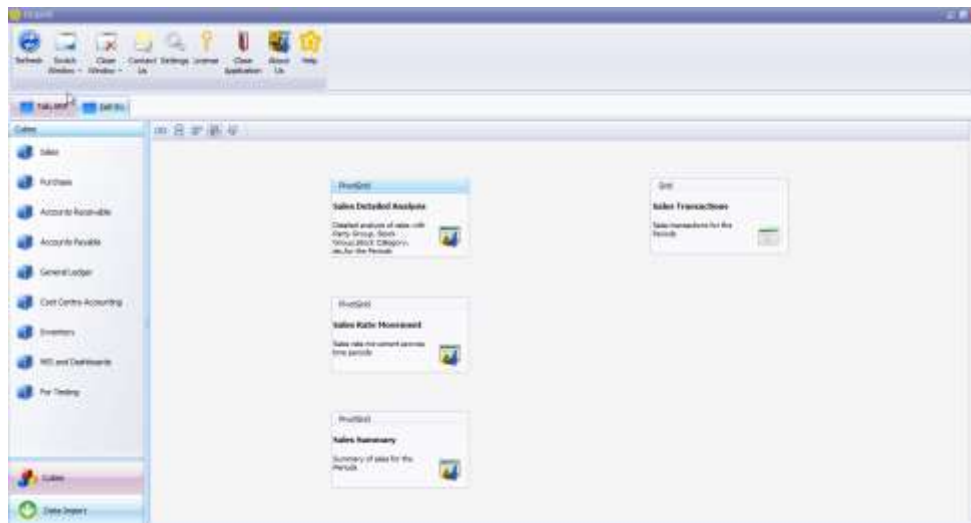


Data Sheet: Orqubit Business Intelligence

Overview

Orqubit Business Intelligence is a reporting and MIS suite comprising of tools to help users with analyzing data from a variety of solutions – ERP and custom build applications. With Orqubit Business Intelligence, you can slice and dice data and apply functions such as variation, data interval, etc. to derive different reports out of the data. It also provides users with interactive dashboards with drill down and drill back features. All reports and dashboards are user customizable requiring little to no IT department assistance.



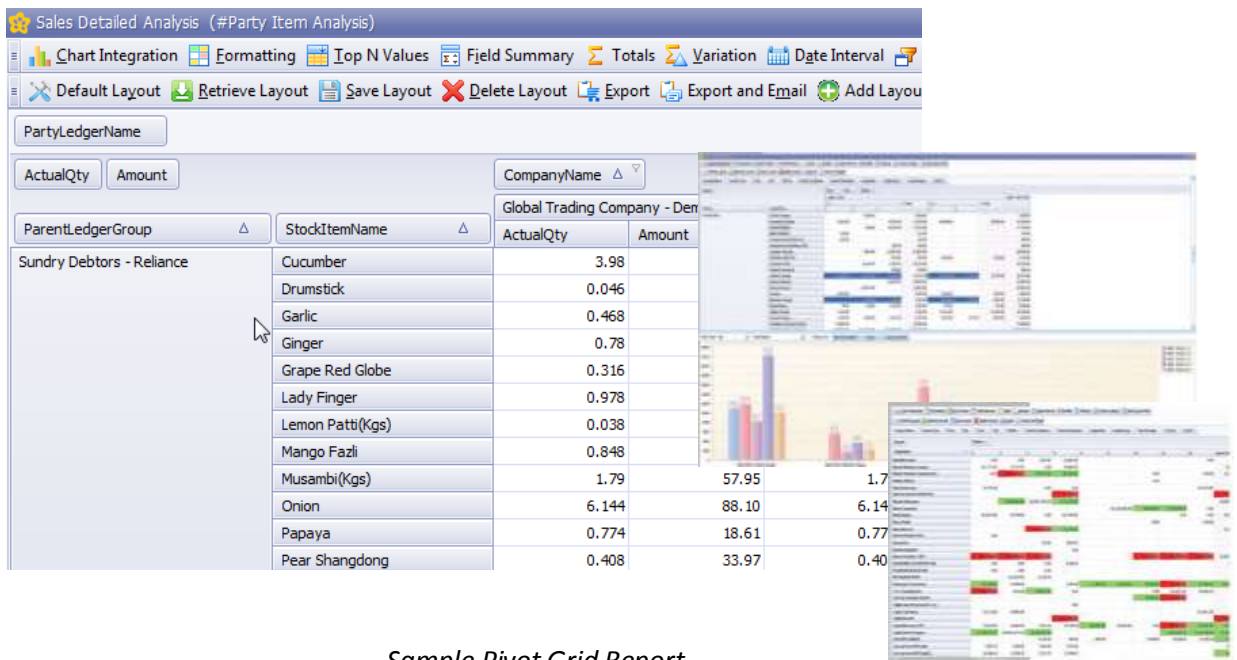
Key Benefits

- Minimal learning curve - designed to be used by business users without having any technical knowledge
- Unlimited user support and short implementation cycle leads to higher return on your investment
- Intuitive user interface with drag and drop technology
- Ad-hoc and user defined reports and dashboards with option to save layouts with all report or dashboard customization such as filters, formatting, etc.
- Export to Excel, PDF, Word and other common formats for easy distribution of reports and dashboards over networks and email
- In-memory analysis technology removes the need for data warehouses and / or data marts
- Role based security with Report Group, Report and Field level security options allows for secure access to data

Features

- PivotGrid, Grid and Dashboard report types
- Key PivotGrid Features
 - Drag and drop functions for adding fields to layout

- Layout management supporting saving, retrieving and removal of report layouts based on user security rights
- Chart Integration: Provides realtime integration with different chart types based on drag and select
- Formatting: Conditional formatting tool allowing creation of exception reports and highlight user defined conditions
- Top N Values: Provides top and bottom n value filtering with option to show "Others" data row
- Field Summary: Change the summary of any field from sum to min, max, average, standard deviation, etc.
- Totals: Show and hide totals and add running totals
- Variation: Show variation in figures in absolute or percentage terms, e.g. month on month, quarter on quarter, etc. Also, allows for contribution analysis at the row or column level
- Date Interval: Convert any date field into any time dimension, e.g. month, week, year, day of week, etc.
- Pre-Filter: multiple filter conditions on multiple fields
- Custom Field: Add user defined fields to reports with custom formulae and conditions



Sample Pivot Grid Report

- Key Grid Features
 - Drag and drop functions for adding fields to layout
 - Layout management supporting saving, retrieving and removal of report layouts based on user security rights
 - Formatting: Conditional formatting tool allowing creation of exception reports and highlight user defined conditions
 - Field Summary: Change the summary of any field from sum to min, max, average, standard deviation, etc.
 - Date Interval: Convert any date field into month or year

- Totals: Show and hide totals and add running totals
- Filter: multiple filter conditions on multiple fields

Sales Transactions (#Sales Transactions)

Formatting Total Reset Totals Date Interval Cell Merge Auto Filter Clear Filters Remove Fields

Default Layout Retrieve Layout Save Layout Delete Layout Export Export and Email Add Layout Field

Company Name

Voucher Type Name	Date	Voucher No	Party Ledger Name	Stock Item Name
Sales - WCT	20/04/...	\Sales WCT\3\09-10\	SD - Dishnet Wireless Ltd	
Sales - Local - Credit	20/04/...	\Sales Local Credit\15\...	SD - Hosch Equipment (India) Pvt Ltd	Armstrong Eris Butt Edge @ 12
Sales - Local - Credit	20/04/...	\Sales Local Credit\15\...	SD - Hosch Equipment (India) Pvt Ltd	Armsstrong Grid @ 4%
Sales - Local - Credit	20/04/...	\Sales Local Credit\15\...	SD - Hosch Equipment (India) Pvt Ltd	
Sales - Local - Credit	20/04/...	\Sales Local Credit\15\...	SD - Hosch Equipment (India) Pvt Ltd	
Sales - Local - Credit	20/04/...	\Sales Local Credit\15\...	SD - Hosch Equipment (India) Pvt Ltd	
Sales - Local - Credit	21/04/...	\Sales Local Credit\16\...	SD - Studio Print Art	Armstrong Fine Fissured T
Sales - Local - Credit	21/04/...	\Sales Local Credit\16\...	SD - Studio Print Art	Armstrong Wall Angle
Sales - Local - Credit	21/04/...	\Sales Local Credit\16\...	SD - Studio Print Art	Suprafine 3.0m Main Beam
Sales - Local - Credit	21/04/...	\Sales Local Credit\16\...	SD - Studio Print Art	1200mm Cross Tee 24 Retail
Sales - Local - Credit	21/04/...	\Sales Local Credit\16\...	SD - Studio Print Art	600 MM Cross Tee 24 Retail Ne

Sample Grid Report

- Key Dashboard Features
 - Multiple dashlet types comprising Chart, Treeview, Grid, Gauge, etc.
 - Support for multiple dashlets in each dashboard with option for user customization of dashboard layout
 - Saving and retrieval of dashboard layout
 - Customization of dashlets by end-user, e.g. Chart Type, Drill-down options, Filters, etc.
 - Drill down and drill back of Charts
 - Zooming and scrolling of Charts
 - Top N Analysis



Sample Dashboard

- Integrated Report Designer
 - Configuration of reports and dashboards
 - Configuration of report and dashboard parameters
 - Export and Import of Reports (for remote deployment of reports)

- User Administrator
 - Role based security at report group, report and report field level
 - Unlimited roles
 - Unlimited users

Technical Data

Platform	Microsoft.NET 2.0
Application Database (for internal application use)	SQL Server 2005 Express or above
Database Support	Currently SQL Server datasources are supported. Next version to support all OLE DB datasources, i.e. SQL Server, MS Access, Oracle, My SQL, Progress (feasibility study ongoing), etc.
Architecture	N-Tier Client Server
Data Management Technology	SQL Query based In Memory Analysis. No need for maintenance of OLAP cubes, data warehouses or data marts
ERP Integration	Tally.ERP9 (data import through XML interface) SAP Business One (direct on SQL Server) Microsoft NAV (direct on SQL Server)
Server Requirements (Large Enterprise – large size data set)	Windows Sever 2003 or above 4 GB RAM 1 GB free hard disk space .NET Framework 2.0 or above (can be installed during installation of Orqubit BI)
Server Requirements (Small to Medium Enterprise – small to medium size data set)	Windows XP or above 2 GB RAM 1 GB free hard disk space .NET Framework 2.0 or above (can be installed during installation of Orqubit BI)
Client Requirements	Windows XP or above 512 MB RAM (Recommended 1 GB RAM) 500 MB free hard disk space .NET Framework 2.0 or above (can be installed during installation of Orqubit BI)

Further Information



Orchid Technical Consultancy P Ltd
8 Circus Market Place
Calcutta 700017
info@orchidtec.in
+91 33 4008 1833 - 37
+91 99039 79297